



# Credit Union UPDATE

A Quarterly Publication of International Harvester Employee Credit Union, Inc.  
"Serving Members and the Community Since 1934"

First Quarter 2005



the  
ultimate  
room  
makeover

Are you tired of  
your living area?

Do you have a  
room in your house  
you would like to  
improve?

We at  
International  
Harvester  
Employee Credit  
Union can help!



Take out a Home Equity Line-of-Credit with us  
between April 1 - May 31, 2005  
and you'll receive a

**\$50 gift certificate to** 

You'll get a great rate as low as **4.75% APR**

AND will be entered into a drawing for a

**cash prize of \$1,500**

you can use towards home improvements,  
paying bills, or whatever you wish!

In addition to this great offer, you'll have the  
added benefits of

- ◆ no application fees
- ◆ no title search fees
- ◆ no closing costs
- ◆ no prepayment penalties
- ◆ interest you pay may be tax deductible!

Call or stop by the credit union today to take  
advantage of this great limited time offer!

## You Asked ... We Listened!

Good news for ATM users! Effective  
May 1st, 2005, you can now use your  
ATM card for cash withdrawals 10  
times a month, instead of 5, without a  
fee! ATM withdrawals in excess of 10  
each month will incur a \$1 per  
withdrawal fee.

IHECU has six surcharge-free ATMs  
in the area including:

- 5000 Urbana Road
- 145 West High Street
- 4401 South Charleston Pike
- 3880 East National Road
- Community Hospital lobby
- International Truck & Engine Plant

IHECU is also a member of the  
Alliance One network, which is a  
nationwide group of surcharge-free  
ATMs. Locally, there are several to  
choose from including:

### The Education Credit Union

1427 West First Street

**Heartland FCU**

1156 North Bechtel Avenue

**Wright-Patt CU**

1600 Upper Valley Pike

**Heartland FCU**

1620 Upper Valley Pike

**DP&L Employees Plus FCU**

50 East Columbia Street

After all, shouldn't that money be yours to  
keep?



\*No purchase necessary. See www.ihecu.com or call 937-390-1800 for complete contest rules. Contest open to all members of IHECU. To enter, print your name, address, city, state, zip, day and evening phone numbers on a 3 x 5 card and mail in a stamped #10 envelope to Ultimate Room Makeover, 5000 Urbana Road, Springfield, OH 45502. To be entered into the drawing, mail-in entries must be postmarked by 5/31/2005 and received by 6/1/05.  
\*\* Mortgage loans limited to the following counties: Champaign, Clark, Greene, Logan, Madison, Miami, Montgomery. Rates shown are Adjustable and are subject to change. The actual rate will reflect a members' individual circumstance and credit score and may be higher than the interest rate mentioned above. Restrictions may apply. Contact the credit union for details. Consult your tax advisor to find out about tax deductibility.

## While Interest Rates Begin to Climb, Why Not Lower Yours?

If you currently have an auto loan at another financial institution, IHECU will beat your rate by 1/2% APR! Just bring us a copy of the loan document from your current auto loan, and we will finance the remaining term of the loan at a lower rate. No mileage or age limit of vehicles. And, to make things even more convenient, we offer payroll deduction for your loan to make paying your monthly payments as easy as possible. Call or stop by our loan department today to take advantage of this great limited time offer!

\*Current IHECU loans do not apply. Minimum rate offered will be 5.25% or lowest rate offered by IHECU. Member must qualify based on our lending guidelines. The actual rate will reflect a members' individual circumstance and credit score and may be higher than interest rate mentioned above. Restrictions may apply. Contact the Credit Union for details.

## Support Your Credit Union!

Due to the rise in cost of postage for mailing statements and the cost of account maintenance, effective May 1st, the monthly fee for aggregate balances for savings under \$100 with no loans will be \$3.

We encourage all members to take advantage of all the benefits the credit union has to offer. We need your support to be able to continue to provide the products and services at the great rates we offer now. Be sure to look to your credit union for all your financial needs!

# eStatements



**Privacy. Security. Convenience.**

No more worrying about your statement getting lost or stolen in the mail. No more worrying about identity theft. You can now view your monthly statements online from the comfort of your home or office when it's convenient for you. And it's there when you need it at the beginning of the month.

Enroll at [www.ihecu.com](http://www.ihecu.com) or ask a staff member today!



## Third Annual Fundraiser a Big Success for IHECU & Special Wish

In the credit union spirit of "People Helping People," International Harvester Employee Credit Union again took part in our annual fundraiser for A Special Wish Foundation. All throughout the months of October, November and December 2004, we raised money for A Special Wish Foundation through our treasure chest gift certificate event. We were able to raise \$1,000, and presented the check to the Springfield North High School Chapter on January 6, 2005. Thank you to all who donated this year! This money will go towards granting a local child's wish, and we owe this all to you, our valued members who actively participated in this year's fundraiser.

International Harvester Employee Credit Union would also like to thank the following restaurants for donating gift certificates for use in our Treasure Chest for the event:

El Torro Mexican Restaurant  
Klosterman's Derr Road Inn  
Los Mariachis  
Penn Station East Coast Subs  
Perkins Restaurant & Bakery  
Short Stop  
Subway  
Tea Berries  
Texas Roadhouse  
Young's Jersey Dairy



Pictured from Left to Right are:  
Yale Kline, Director of Special Wish at North High School,  
Michelle Goodfellow, Julie Blankenship, Joyce Walden,  
Cindy Spridgeon, Amanda Calliccoat and Cindy Moeller.  
These were only a few of the many staff members who helped with this year's fundraising event.

# CU Youth Week is April 17-23

Struggling for economic prosperity is difficult for everyone. It's especially hard for young people who've never learned how to plan to achieve financial security.

What we need today, confirmed by poor literacy test scores from across the country, is leadership to help raise the awareness of financial issues for young people.

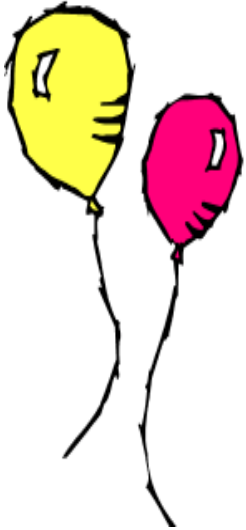
The staff and members of International Harvester Employee Credit Union are ideally positioned to respond because we believe in the power of education - put to practical use -- to improve the lives of our neighbors and our community. Our tradition of service and philosophy of self-help make International Harvester Employee Credit Union and all credit unions a natural source of leadership in the fight against financial ignorance.

Join us this year as we celebrate National Credit Union Youth Week from April 17-23. Our theme for 2005 is "Want it ... save it ... get it!"

Visit the credit union any time during that week and get valuable information on the rewards of

saving money and even pick up a treat while you're here. We will also be hosting our 3rd Annual pizza party for all youth members, which will be held on Tuesday, April 19th. Keep an eye on your mailbox in March for your invitations, kids!

What a great time to talk to your family about spending and savings, whether for a new bike or for college. For more information, call the credit union at 937-390-1800.



**want it...  
SAVE IT... get it!**

NATIONAL CREDIT UNION YOUTH WEEK 2005

## IMPORTANT NOTICE TO ALL MEMBERS

THE SPRINGFIELD CREDIT UNION HAS MERGED WITH INTERNATIONAL HARVESTER EMPLOYEE CREDIT UNION.

PLEASE SEND ALL CORRESPONDENCE TO:

5000 URBANA ROAD  
SPRINGFIELD, OH 45502

THANK YOU FOR YOUR BUSINESS!



## % SAVINGS RATES

As of March 15, 2005

	Annual Dividend Rate	Annual Percentage Yield (APY)
<b>Regular Share Savings Account, Earnie the Early Bird (Youth Savings)/Christmas Club:</b>		
Balances \$100.00 - \$9,999.99 .....	.60%	.60%APY
Balances \$10,000.00 - \$49,999.99.....	.69%	.69%APY
Balances \$50,000.00 and higher .....	.80%	.80%APY
<b>Share Draft Checking Account:</b>		
Balances \$500.00 - \$2,499.99 .....	.40%	.40%APY
Balances \$2,500.00 - \$9,999.99 .....	.55%	.55%APY
Balances \$10,000.00 and higher .....	.69%	.70%APY
<b>Money Market Share Savings Account:</b>		
Balances \$1,000.00 - \$9,999.99 .....	1.98%	2.00%APY
Balances \$10,000.00 - \$49,999.99 .....	1.76%	2.80%APY
Balances \$50,000.00 and higher .....	2.95%	3.00%APY

For more information about rates and fees, contact the credit union at (937) 390-1800 or 1-800-576-4428. We may offer different rates in the future.

# **% LOAN RATES**

**As of March 15, 2005**

Rates as low as...

**New Autos, Trucks, Vans, Boats, RVs and Motorcycles**

24 months	5.25% APR
36 months	5.25% APR
48 months	5.25% APR
60 months	5.50% APR
72 months	6.00% APR

**Used Autos, Trucks, Vans, Boats, RVs and Motorcycles**

24 months	5.50% APR
36 months	5.50% APR
48 months	5.50% APR
60 months	5.75% APR
72 months	6.25% APR

**Unsecured Loans**

\$500 - \$1,499	9.95% APR
\$1,500 & over	9.75% APR

**First Mortgages (Adjustable Rate, Owner Occupied)**

3.25% APR	up to 360 months (1 year adjustable)
4.25% APR	up to 360 months (3 year adjustable)

**First Mortgages (Fixed Rate, Owner Occupied)**

4.99% APR	up to 180 months (15 years)
5.25% APR	up to 240 months (20 years)
5.50% APR	up to 360 months (30 years)

**First Mortgages (Adjustable Rate, Investment Property, Lots, Vacant Land)**

5.25% APR	up to 360 months (1 year adjustable)
6.25% APR	up to 360 months (3 year adjustable)

**Second Mortgages (Fixed Rate)**

5.50% APR	up to 60 months (5 years)
5.75% APR	up to 120 months (10 years)
6.00% APR	up to 180 months (15 years)

**Home Equity Lines of Credit (Adjustable Rate)**

4.75% APR	up to 180 months (Up to 80% Loan-to-Value)
-----------	--

**VISA Classic Credit Card**

10.9% APR

**VISA Platinum Credit Card**

7.9% APR

**Share Secured Loans**

3.00% APR	up to 36 months (\$1,000 and over)
-----------	------------------------------------

**Share Certificate Loans**

2.00% APR above certificate rate

**\*Rates subject to change. The actual rate and payment amount will reflect a members' individual circumstance and credit score and may be higher than the rates above.**

Restrictions may apply. Contact the credit union for details.



**INTERNATIONAL HARVESTER EMPLOYEE CREDIT UNION, INC.**

5000 Urbana Road & 145 West High Street  
Springfield, OH 45502  
(937) 390-1800

Toll-Free 1-800-576-IHCU  
All States (4428)  
Anytime Info-Line 1-800-261-2188

World Wide Web Address:  
www.ihecu.com

Main Office Hours  
Mon. thru Fri. 9 a.m. - 5 p.m.  
Branch Hours  
Mon. - Thurs. 9 a.m. - 5 p.m. &  
Friday 9 a.m. - 5:30 p.m.

**BOARD OF DIRECTORS**

Thomas Whitacre . . . Chairman of the Board  
Jack Kitchen . . . . . Vice Chairman  
Jim Kitchen . . . . . President/Treasurer  
Sue Whalen . . . . . Secretary  
Jeff Harshaw . . . . . Director  
Kim Victoria . . . . . Director  
Scott Hunter . . . . . Director  
Tommy Freeman . . . . . Director

**OFFICE MANAGEMENT**

Jim Kitchen . . . . . President/CEO/Manager  
Myron Wells . . . . . Exec.VP/CFO/Asst.Manager  
Elaine Doane . . . . . VP Finance  
Sean Doane . . . . . VP Information Systems  
Gary Dollinger . . . . . VP Loans and Operations  
Veronica Van Bourgondien . . . . . VP of  
Human Resources  
Amanda Callicoat . . . . . Director of Marketing/  
Business Development  
Bill White . . . . . Branch Manager  
Robb White

**OFFICE STAFF**

Sue Bannert	Rita Hughes
Julie Blankenship	Debra Johnson
Judie Brewer	Mary McDaniel
Tim Brown	Darlene McGee
Crystal Bundick	Cindy Moeller
Patti Callahan	Vicky Moss
Cheryl Claypool	Sharalee Newland
Julie Day	Kay Phelps
Brooke Eivlsizer	Mary Rife
John Fogarty	Margo Shackelford
Lori Foster	Pam Smith
Teresa Georges	Cindy Spridgeon
Michelle Goodfellow	Joyce Walden
Kate Hall	Michelle West
Cheri Hanson	Charmelle Wright
Jessica Hilderbrand	Martina Yeatts
Pam Hilton	



John Campbell Pam Campbell

**CREDIT COMMITTEE**

Jeff Harshaw Jim Kitchen  
Kim Victoria Tommy Freeman



**International Harvester Employee Credit Union will be closed on the following dates:**

**Monday, May 30th - Memorial Day**

**Monday, July 4th - Independence Day**

**Remember...**

**STAR® ATM Machines, Anytime Info-Line, Virtual Branch® Home Banking and PayIT® are available 24 hours-a-day, seven-days-a-week for your convenience. Use them for your simple transactions during the holidays.**