

Our 69th Annual Meeting is Almost Here!

All shareholders are invited to attend the

69th Annual Meeting

of International Harvester Employee Credit Union, Inc.

DATE: Saturday January 25th, 2003

TIME: 2 p.m.

PLACE: North High School Auditorium
East Home Road, Springfield, OH

Business to be conducted at this meeting will include
annual reports and the election of directors.

* * *

Your Board of Directors Announce Great News for Borrowers & Savers

Year-End Rebate and Bonus Dividend Declared

The decision has been made once again by the Board of Directors to extend a year-end interest rebate and bonus dividend to the members of the International Harvester Employee Credit Union, Inc. The Board has announced the following:

- A 2.54% per annum dividend for December 2002 on Share Accounts #01 and #02. (1.54% regular plus 1% bonus).
- A 6% rebate of interest paid of loans in 2002 to qualified shareholders on eligible loans.

Thank You to the Following Restaurants for Donating Gift Certificates to use in our Treasure Chest for Charity:

Applebee's Neighborhood Grill & Bar ♦ Bradfield's
Cracker Barrel Old Country Store ♦ TGI Friday's Grill & Bar
Perkins ♦ Pizza Hut ♦ Red Lobster
♦ Tumbleweed Southwest Mesquite Grill & Bar ♦

These generous donations to our raffle for "A Special Wish" Foundation were what made it so successful, and we were able to donate \$350 to ASW. *Thank you so much for your generous support of our cause!*

IHECU International Credit Union Day —



*Earnie the Early Bird
with a map of all the
Credit Union
countries worldwide*



ASW Presentation



*Michelle serves a cookie to a member
during International C.U. Day*

Congratulations to the Winners of the Prizes Drawn on International Credit Union Day

6-month old **MACHAELA WHALEY** was the winner of the Fisher Price "Gumball Swirl Castle"

CLAY SPANGLER, 6-years old, was chosen to win the "Singing Machine" karaoke cassette player/recorder

DOMINIC STEWART won the Sony Playstation One console and game.

*Congratulations, and thanks for coming to support
International Credit Union Day!*



We Now Have Newport Aquarium Tickets!

ADULTS	CHILDREN (3-12)
Discounted Price: \$ 13.00	Discounted Price: \$ 9.00
Gate Price: \$ 16.00	Gate Price: \$ 10.00
You Save: \$ 3.05	You Save: \$ 1.00

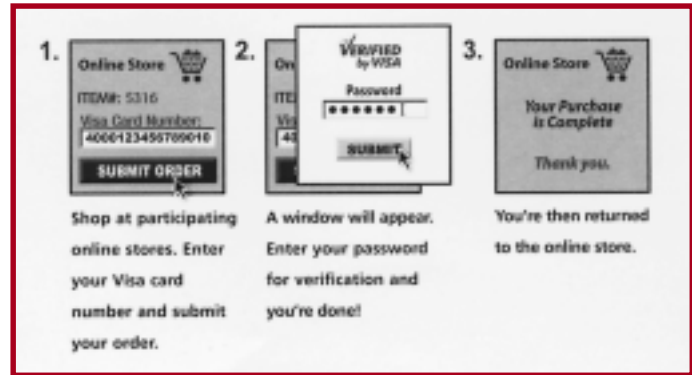
**NEWPORT
AQUARIUM**

**"It's simply a Million
Gallons of Fun!"**

Introducing **VERIFIED BY VISA**

Take the Visa card you already use, add a password to confirm online purchases, and you've got

Verified by Visa. It's the new service – exclusively for Visa cardholders – that offers you added safety by helping ensure that only you can use your Visa card online. Of course, Visa always protects you against unauthorized purchases online. But now, by using your Verified by Visa password, you can help prevent unauthorized purchases *before* they even happen. Security that's linked to your card, not your computer. Create your password today at www.visa.com/verified.



Quicken® TurboTax® for the WebSM

>> **It's fast!** <<

>> **It's easy!** <<

>> **Its calculations are** <<
guaranteed accurate!

This is the easiest way to do your taxes on the web. The Quicken TurboTax interview style software walks you step-by-step, building your return with your answers to easy-to-understand questions.

Because the advanced software saves your work as you go, build and edit your tax return at your leisure. Once prepared, print and send your return to the IRS for e-file!

Go to <http://www.ihecu.com> and click on the TurboTax for the Web link!

Cingular Lets You Talk, Talk and Talk

Talking is fun, right? What about talking and saving money at the same time? That's even better!

As a member of International Harvester Employee Credit Union, you're eligible for discounts from Cingular Wireless on a wide variety of calling plans, including Home and Nation plans.

As the second largest wireless company in the U.S., Cingular Wireless is dedicated to self-expression and customer-friendly service. And now, with this special offer for Credit Union members, they're dedicated to saving you money too.

Let Cingular Wireless help you express yourself. For more information, visit any Cingular Wireless store location in Southern Ohio, call toll-free 800.865.2006 (Cincinnati), 800.767.0419 (Dayton), 800.480.2416 (Columbus), or e-mail s.ohio.cu.members@cingular.com.



GOT THE WALL STREET JITTERS? **Nerve-Soothing Investment Options**

Most financial advisors will tell you a diverse investment plan is the best plan. And diversifying your investments means putting some of your hard-earned money in a safe place. International Harvester Employee Credit Union gives you that option. Our savings and investment products offer a guaranteed return, plus the peace of mind that comes from knowing your deposits are federally insured up to \$100,000. Furthermore, no International Harvester Employee Credit Union member has ever lost a penny in a deposit account at the credit union.

So settle your nerves while you save for your future by investing in one of our safe, high-yield investment options:

- Regular Share Savings Accounts • "Earnie the Early Bird" Youth Accounts •
- Share Certificates • Money Market Accounts • Christmas Club Accounts •



5000 Urbana Road
Springfield, OH 45502
(937) 390-1000
www.ihecu.com



The Smart Way to Borrow Money & Save on Your Taxes... A Home Equity Loan from IHECU

**You get the money you need –
plus a tax deduction!***

**RATES AS
LOW AS
3.25%
APR**

There's only one smart way for homeowners to borrow money today: A HOME EQUITY LOAN. That's because, under the current tax laws, a home equity loan is one of the only loans – aside from your mortgage – where the interest is fully deductible on your Federal Income Tax return.* And there's only one smart place to get your home equity loan: **INTERNATIONAL HARVESTER EMPLOYEE CREDIT UNION.**

You SAVE with our low interest rates!

Why pay high interest rates on your credit cards or other consumer loans that are not tax-deductible anymore? Consolidate them – and save – with a home equity loan from IHECU! You can get a Line of Credit with a competitive interest rate that's much lower than current rates on conventional loans and credit cards.

You SAVE with absolutely NO Closing Costs!

That's right!!!...Closing costs on select International Harvester Employee Credit Union Home Equity Loans are "on the house."

This special offer is limited, so hurry and contact the credit union now and you can save from \$175 to \$200 in closing costs, appraisal, etc. on loans from \$4,000 to \$50,000.

**Call or stop by the credit union
for your Home Equity Loan,
and let us put your closing
costs "on the house!!"**

NOTE: Mortgage Loans are available in Clark County and all bordering counties, plus Logan County.

*Consult your tax advisor for specific conditions and details.

Home Equity Loans at IHECU offer these advantages:

Open-end, obtain advances at your convenience.

Borrow up to 90% of your home's appraised value, less the first mortgage balance.

Variable Rate Interest (Variable Rates are subject to change).


Use for a new car, college education, home improvements, and more!

Interest is calculated on the unpaid balance for the number of days between payments.

It is our privilege to announce the newest Select Employee Groups of the IHECU

- A & E Powder Coating, LLC
- ARCTECH Fabricating, Inc
- Burton-Minnick, Inc.
- Danco Enterprises, Inc
- Douglas W. Geyer & Associates
- Foley Benefits Group
- Springfield News-Sun
- Steve Brownlee Realty, Inc.
- Yemrot Inc. dba Roscommon Properties Co.
- Humble Construction
- KK Tool Company
- KNS Short Stop
- Link-Hellmuth, LLC
- Miller Engine & Machine
- Pentaflex, Inc.
- Real Estate II

A big "IHECU" welcome to each of these companies and we at the credit union look forward to taking care of all of your financial needs!

Dividend 	SAVINGS RATES AS OF DECEMBER 11, 2002	ANNUAL DIVIDEND RATE	ANNUAL PERCENTAGE YIELD (APY)
Regular Share Savings Account, Earnie the Early Bird (Youth Savings) .		1.54%	1.55% APY
Christmas Club Share Savings Account		1.47%	1.50% APY
Money Market Share Savings Account \$1000 - \$4,999.99		1.79%	1.80% APY
\$5,000 & over		1.98%	2.00% APY
Share Draft Checking Account		1.33%	1.35% APY
Share Certificates			
6 month certificate		2.03%	2.05% APY
12 month certificate		2.22%	2.25% APY
18 month certificate		2.47%	2.50% APY
24 month certificate		3.15%	3.20% APY
30 month certificate		3.49%	3.55% APY
36 month certificate		3.87%	3.95% APY
48 month certificate		3.97%	4.05% APY
60 month certificate		4.02%	4.10% APY

For more information about rates and fees contact the credit union at (937) 390-1800 or 1-(800) 576-4428. We may offer different rates in the future.



%% %% %% %% %% %% %%

LOAN RATES As of December 11, 2002

Rates as low as

New Autos, Trucks, Vans, Boats, RVs and Motorcycles

24 - 48 months	5.00% APR
60 months	5.25% APR
72 months	5.50% APR

Used Autos, Trucks, Vans, Boats, RVs and Motorcycles

24 - 48 months	5.50% APR
60 months	5.75% APR
72 months	6.00% APR

Unsecured Loans

\$500 - \$1,499	11.00% APR
\$1,500 & over	7.95% APR

First Mortgages (Adjustable Rate, Owner Occupied)

4.00% APR	up to 300 months (1 year adjustable)
5.00% APR	up to 300 months (3 year adjustable)

First Mortgages (Fixed Rate, Owner Occupied)

5.50% APR	up to 180 months (15 years)
5.75% APR	up to 240 months (20 years)
6.00% APR	up to 360 months (30 years)

NOTE: Rate is 1/8%APR higher for loan to value between 81-90%

First Mortgages (Adjustable Rate, Investment Property, Lots, Vacant Land)

6.00% APR	up to 300 months (1 year adjustable)
7.00% APR	up to 300 months (3 year adjustable)

Second Mortgages (Fixed Rate)

4.75% APR	up to 60 months (Up to 80% Loan-to-Value)
5.75% APR	up to 60 months (Up to 90% Loan-to-Value)
5.25% APR	up to 120 months (Up to 80% Loan-to-Value)
6.25% APR	up to 120 months (Up to 90% Loan-to-Value)
5.75% APR	up to 180 months (Up to 80% Loan-to-Value)
6.75% APR	up to 180 months (Up to 90% Loan-to-Value)

Home Equity Lines of Credit (Adjustable Rate)

3.25% APR	up to 180 months (Up to 80% Loan-to-Value)
4.25% APR	up to 180 months (Up to 90% Loan-to-Value)

Visa Classic Credit Card

10.9% APR

Share Secured Loans

5.00% APR up to 36 months (\$1,000 & over)

Share Certificate Loans

2.00% APR above Certificate rate

*Rates subject to change. The actual rate and payment amount will reflect a members' individual circumstance and credit score and may be higher than the rates above.

Restrictions may apply. Contact the Credit Union for details.

The Credit Union will be

CLOSED:

International Harvester Employee Credit Union will be closed on the following dates:

Monday, January 20 th	Martin Luther King Jr. Day
Monday, February 17 th	Presidents' Day
Friday, April 18 th	Good Friday

♦ ♦ ♦

Remember... STAR® ATM Machines, Anytime Info-Line, Virtual Branch® Home Banking and PayIT® are available 24 hours-a-day, seven-days-a-week for your convenience. Use them for your simple transactions during the holidays.



INTERNATIONAL HARVESTER EMPLOYEE CREDIT UNION, INC.

5000 Urbana Road
Springfield, Ohio 45502
(937) 390-1800

Toll-Free 1-800-576-IHCU
All States (4428)
Anytime Info-Line 1-800-261-2188

World Wide Web Address:
www.ihecu.com

Office Hours
Mon. thru Fri. 9 a.m. - 5 p.m.



Thomas Whitacre	Chairman of the Board
Jack Kitchen	Vice Chairman
Jim Kitchen	President/Treasurer
Angela Theriac	Secretary
Jeff Harshaw	Director
Kim Victoria	Director
Sue Whalen	Director
Scott Hunter	Director
Angela Theriac	Director Emeritus
Lewis Jones	Director Emeritus

OFFICE MANAGEMENT

Jim Kitchen	President/CEO/Manager
Myron Wells	Exec. VP/CFO/Asst. Manager
Elaine Doane	VP Finance
Sean Doane	VP Information Systems
Gary Dollinger	VP Loans and Operations
Veronica Van Bourgondien	VP of Human Resources
Amanda Thomas	Director of Marketing / Business Development

OFFICE STAFF

Carla Anderson	Cheri Hanson
Dominique Beverly	Pam Hilton
Julie Blankenship	Debra Johnson
Judie Brewer	Mary McDaniel
Tim Brown	Darlene McGee
Crystal Bundick	Kay Phelps
Cheryl Bush	Mary Ann Quigley
Julie Day	Margo Shackelford
Susan Dickinson	Pam Smith
Brooke Evilsizor	Cindy Spridgeon
John Fogarty	Joyce Walden
Lori Foster	Michelle West
Teresa Georges	Charmelle Wright
Michelle Goodfellow	Jamie Zirkle



John Campbell Pam Campbell

CREDIT COMMITTEE

Jeff Harshaw	Jim Kitchen
Scott Hunter	Kim Victoria

Printed On
Recycled Paper

